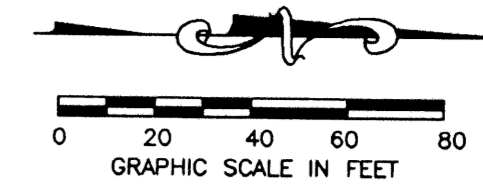


# JOURNEY'S END PLAT ONE

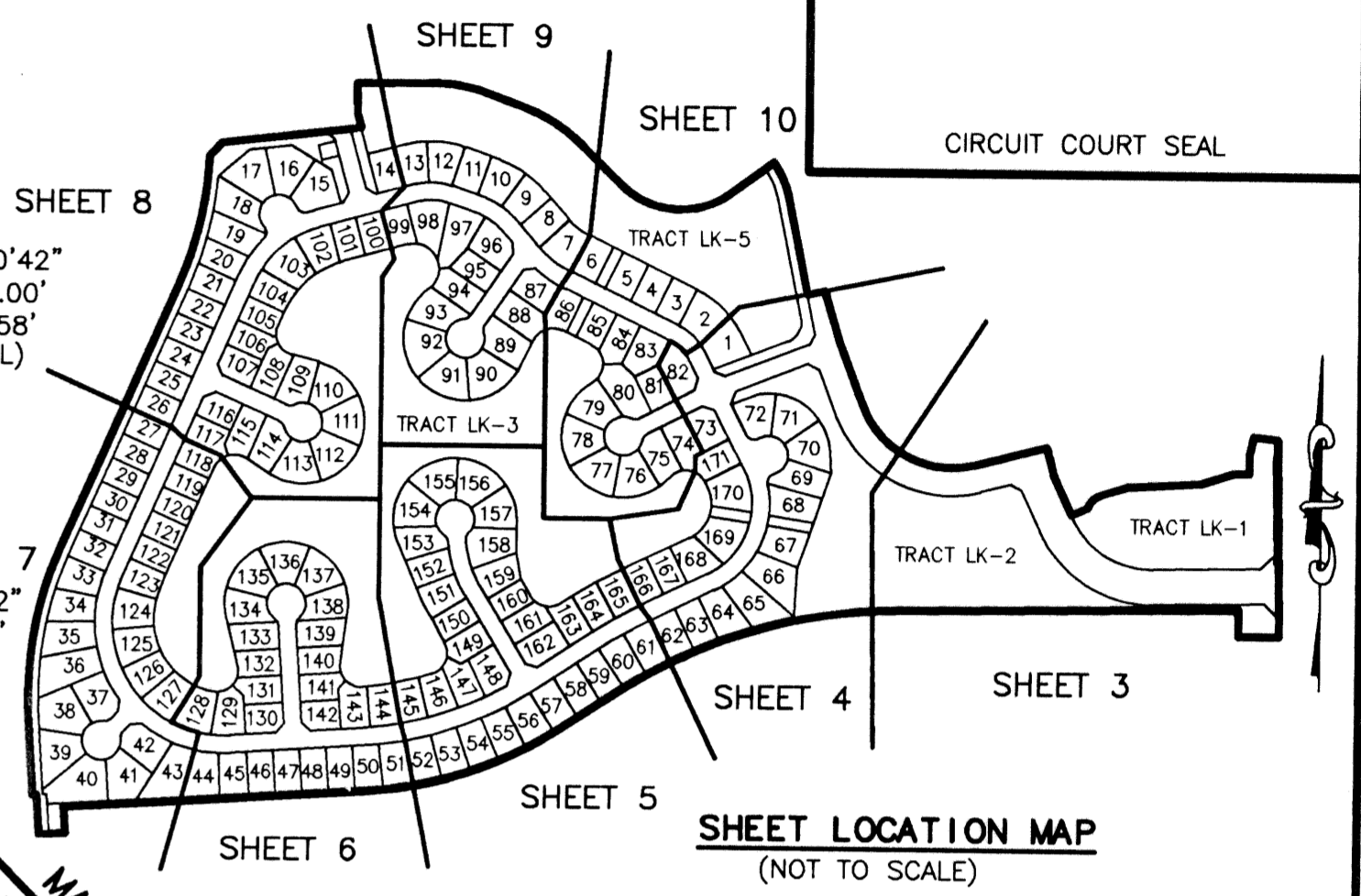
PART OF SMITH DAIRY EAST P.U.D.  
BEING A PORTION OF SECTION 3, TOWNSHIP 45 SOUTH, RANGE 42 EAST  
TOGETHER WITH A REPLAT OF A PORTION OF BLOCKS 38 AND 39,  
PALM BEACH FARMS COMPANY, PLAT NO. 3,  
PLAT BOOK 2, PAGES 45 THROUGH 54  
SITUATE IN SECTIONS 3 & 4, TOWNSHIP 45 SOUTH, RANGE 42 EAST  
PALM BEACH COUNTY, FLORIDA  
JANUARY, 1999 SHEET 4 OF 10



35

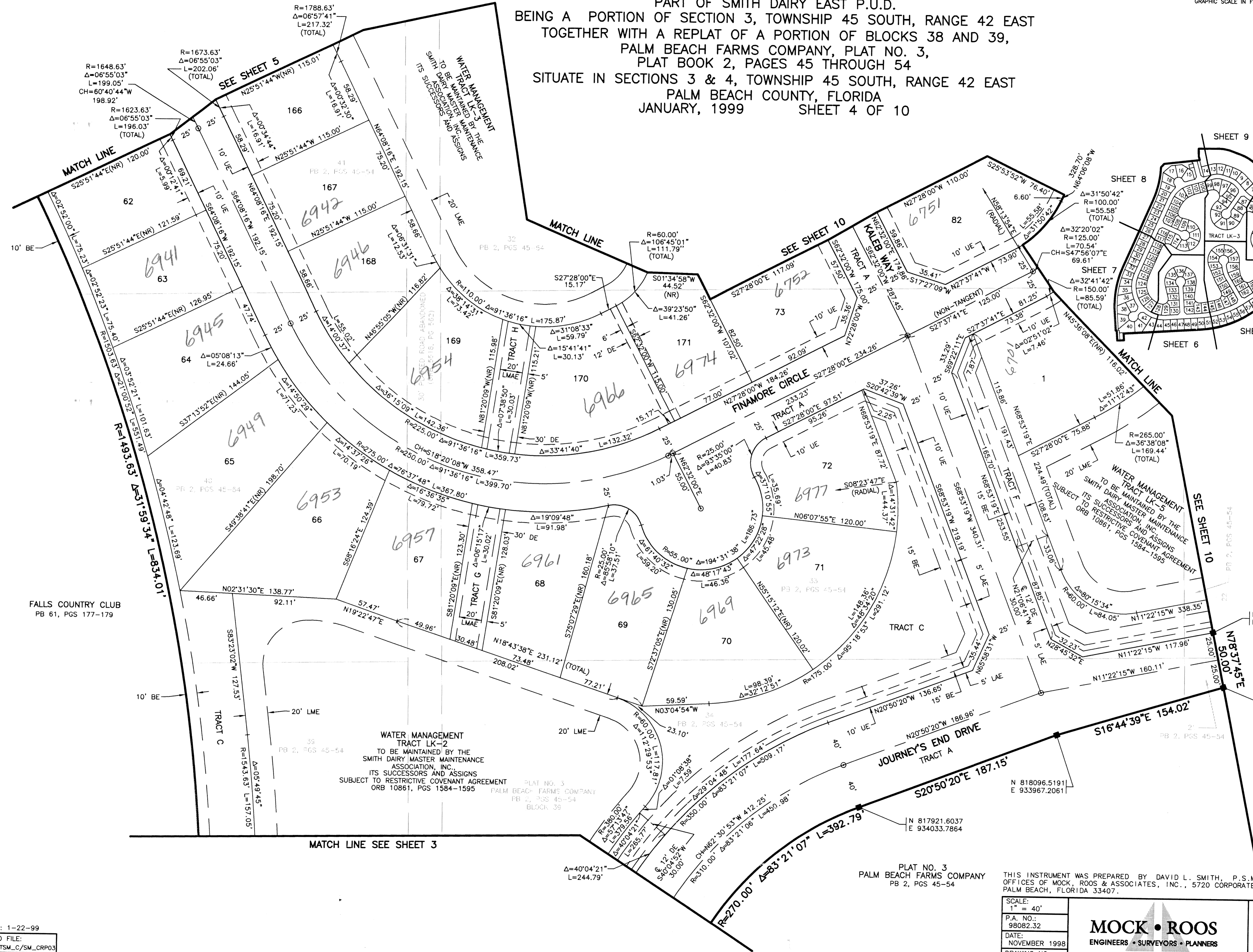
STATE OF FLORIDA  
COUNTY OF PALM BEACH  
THIS PLAT WAS FILED FOR  
RECORD \_\_\_\_\_ DAY OF \_\_\_\_\_  
AD, 1999 AND DULY RECORDED  
IN PLAT BOOK \_\_\_\_\_ ON PAGES  
\_\_\_\_\_ AND \_\_\_\_\_  
DOROTHY H. WILKEN, CLERK  
BY: \_\_\_\_\_, D.C.

CIRCUIT COURT SEAL



SHEET LOCATION MAP  
(NOT TO SCALE)

- LEGEND**
- L ARC LENGTH
  - AE ACCESS EASEMENT
  - BE BUFFER EASEMENT
  - Δ CENTRAL (DELTA) ANGLE
  - CH CHORD
  - DE DRAINAGE EASEMENT
  - LAE LIMITED ACCESS EASEMENT
  - LME LAKE MAINTENANCE EASEMENT
  - LMAE LAKE MAINTENANCE ACCESS EASEMENT
  - PUD PLANNED UNIT OF DEVELOPMENT
  - (NR) NON-RADIAL
  - ORB OFFICIAL RECORD BOOK
  - PB PLAT BOOK
  - PG(S) PAGE(S)
  - R RADIUS
  - (TYP) TYPICAL
  - UE UTILITY EASEMENT
  - PERMANENT REFERENCE MONUMENT FOUND # (SEE NOTE)
  - PERMANENT REFERENCE MONUMENT SET LB-048
  - PERMANENT CONTROL POINT SET LB-048
  - ⊖ CENTERLINE



WATER MANAGEMENT TRACT LK-2  
TO BE MAINTAINED BY THE  
SMITH DAIRY MASTER MAINTENANCE  
ASSOCIATION, INC.  
ITS SUCCESSORS AND ASSIGNS  
SUBJECT TO RESTRICTIVE COVENANT AGREEMENT  
ORB 10861, PGS 1584-1595

PLAT NO. 3  
PALM BEACH FARMS COMPANY  
PB 2, PGS 45-54

THIS INSTRUMENT WAS PREPARED BY DAVID L. SMITH, P.S.M., IN THE  
OFFICES OF MOCK, ROOS & ASSOCIATES, INC., 5720 CORPORATE WAY, WEST  
PALM BEACH, FLORIDA 33407.

SCALE:	1" = 40'
P.A. NO.:	98082.32
DATE:	NOVEMBER 1998
DRAWING NO.:	45-42-03-63

**MOCK • ROOS**  
ENGINEERS • SURVEYORS • PLANNERS  
5720 Corporate Way, West Palm Beach, Florida 33407  
(561) 683-3113, fax 478-7248

SHEET 4 OF 10  
**JOURNEY'S END PLAT ONE**  
PART OF SMITH DAIRY EAST P.U.D. BEING A PORTION OF  
SECTION 3, TOWNSHIP 45 SOUTH, RANGE 42 EAST,  
TOGETHER WITH A REPLAT OF A PORTION OF  
BLOCKS 38 & 39, PALM BEACH FARMS COMPANY,  
PLAT NO. 3, PLAT BOOK 2, PAGES 45 THROUGH 54  
SECTIONS 3 & 4, TOWNSHIP 45 SOUTH, RANGE 42 EAST  
PALM BEACH COUNTY, FLORIDA

SUBDIVISION: Journey's End Plat 1  
 BOOK: 35  
 FLOOD MAP # 170A  
 ZONING: PUD/SE  
 QUAD # 31449  
 SE 80-1001  
 TIAZ: 913  
 PUD NAME: Smith Dairy East

RE: 1-22-99  
CAD FILE:  
WESTSM\_C/SM\_CRP03